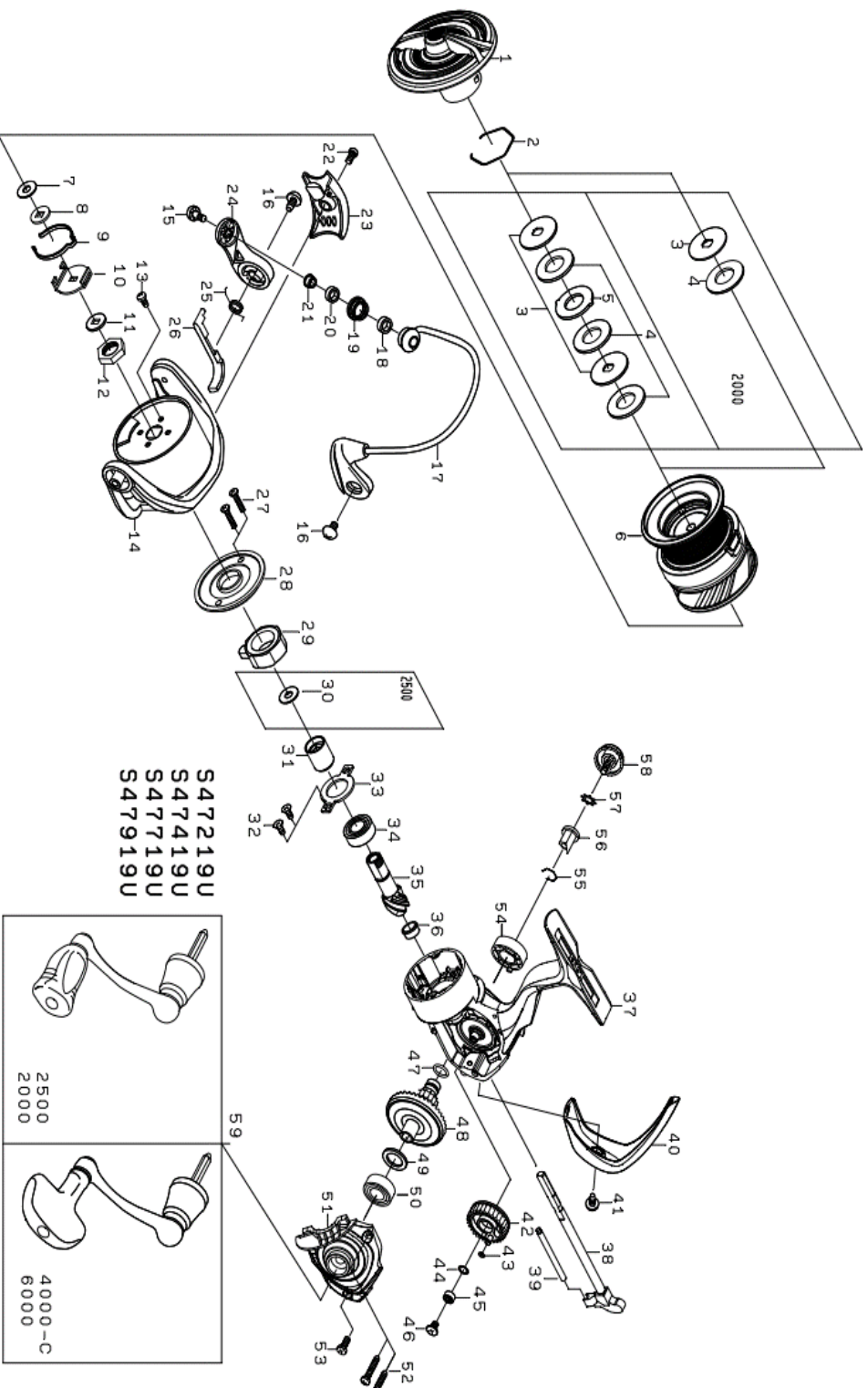




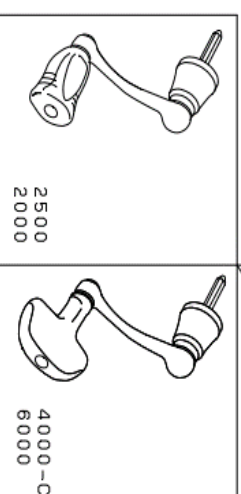
# 20 CROSSFIRE LT 2500

Feel Alive.

Please quote by part number, not key number when ordering.  
 spares@daiwaaustralia.com.au    PH: (02) 8644 8644



S47219U  
 S47419U  
 S47719U  
 S47919U



承認		審査		審査		照査		作成	
								VAN	
								'19/12/25	
変更		米		歴		年月日		氏名	

承認		審査		審査		照査		作成	
								VAN	
								'19/12/25	

REEL NAME	MGFT CODE	KEY NO	PARTS CODE	DESCRIPTION
20 CROSSFIRE LT 2500 4BS A		1	6Q595001	DRAG KNOB
20 CROSSFIRE LT 2500 4BS A		2	6Q346101	DRAG RING
20 CROSSFIRE LT 2500 4BS A		3	6Q621901	DRAG DISK WASHER
20 CROSSFIRE LT 2500 4BS A		4	6J546801	DRAG WASHER
20 CROSSFIRE LT 2500 4BS A		5	6Q346001	DRAG LIP WASHER
20 CROSSFIRE LT 2500 4BS A		2*6	6Q662101	SPOOL ASSY
20 CROSSFIRE LT 2500 4BS A		7	6E398003	SPOOL WASHER (A)
20 CROSSFIRE LT 2500 4BS A		8	6Q348502	SPOOL WASHER (B)
20 CROSSFIRE LT 2500 4BS A		9	6H416101	CLICK LEAF SPRING
20 CROSSFIRE LT 2500 4BS A		10	6M021401	CLICK HOLDER
20 CROSSFIRE LT 2500 4BS A		11	6Q344001	CLICK HOLDER WASHER
20 CROSSFIRE LT 2500 4BS A		12	6Q122401	ROTOR NUT
20 CROSSFIRE LT 2500 4BS A		13	6G627701	ROTOR NUT CREW
20 CROSSFIRE LT 2500 4BS A		14	6Q519505	ROTOR
20 CROSSFIRE LT 2500 4BS A		15	6G195602	ROLLER SCREW
20 CROSSFIRE LT 2500 4BS A		16	6G205001	HOLDER SCREW
20 CROSSFIRE LT 2500 4BS A		17	6Q519601	BAIL
20 CROSSFIRE LT 2500 4BS A		18	6Q203401	ROLLER COLLAR (A)
20 CROSSFIRE LT 2500 4BS A		19	6F625005	LINE ROLLER
20 CROSSFIRE LT 2500 4BS A		20	6G874301	ROLLER COLLAR (B)
20 CROSSFIRE LT 2500 4BS A		21	6G152502	ROLLER COLLAR (C)
20 CROSSFIRE LT 2500 4BS A		22	6G270801	ARM LEVER SPRING COVER SC
20 CROSSFIRE LT 2500 4BS A		23	6Q273702	ARM LEVER SPRING COVER
20 CROSSFIRE LT 2500 4BS A		24	6G838801	A R M LEVER
20 CROSSFIRE LT 2500 4BS A		25	6F800701	ARM LEVER SPRING
20 CROSSFIRE LT 2500 4BS A		26	6Q348401	KICK LEVER
20 CROSSFIRE LT 2500 4BS A		27	6G837101	ONEWAY CLUTCH PLATE SCREW
20 CROSSFIRE LT 2500 4BS A		28	6Q519301	ONEWAY CLUTCH PLATE
20 CROSSFIRE LT 2500 4BS A		29	6Q308301	ONEWAY CLUTCH
20 CROSSFIRE LT 2500 4BS A		30	63758502	ONEWAY CLUTCH WASHER
20 CROSSFIRE LT 2500 4BS A		31	6Q196101	CLUTCH RING
20 CROSSFIRE LT 2500 4BS A		32	6Q195701	PINION BEARING PLATE SCREW
20 CROSSFIRE LT 2500 4BS A		33	6Q195601	PINION BEARING PLATE
20 CROSSFIRE LT 2500 4BS A		34	6G467302	PINION BALL BEARING (A)
20 CROSSFIRE LT 2500 4BS A		35	6Q582701	PINION GEAR
20 CROSSFIRE LT 2500 4BS A		36	6Q419201	PINION COLLAR
20 CROSSFIRE LT 2500 4BS A		37	6Q661901	BODY
20 CROSSFIRE LT 2500 4BS A		38	6Q518901	MAIN SHAFT
20 CROSSFIRE LT 2500 4BS A		39	6Q583801	OSCILLATING POST
20 CROSSFIRE LT 2500 4BS A		40	6Q519401	REAR CAP
20 CROSSFIRE LT 2500 4BS A		41	6G270801	REAR CAP SCREW
20 CROSSFIRE LT 2500 4BS A		42	6Q139001	OSCILLATING GEAR
20 CROSSFIRE LT 2500 4BS A		43	6H770601	OSCILLATING GEAR O-RING
20 CROSSFIRE LT 2500 4BS A		44	6H129201	OSCILLATING GEAR BEARING • W
20 CROSSFIRE LT 2500 4BS A		45	6G469005	OSCILLATING GEAR BALL BEARING
20 CROSSFIRE LT 2500 4BS A		46	6Q126101	OSCILLATING GEAR SCREW
20 CROSSFIRE LT 2500 4BS A		47	6G670501	DRIVE GEAR O-RING
20 CROSSFIRE LT 2500 4BS A		48	6Q341901	DRIVE GEAR
20 CROSSFIRE LT 2500 4BS A		49	63758502	DRIVE GEAR WASHER
20 CROSSFIRE LT 2500 4BS A		50	6G467302	DRIVE BALL BEARING (A)
20 CROSSFIRE LT 2500 4BS A		51	6Q662001	BODY COVER
20 CROSSFIRE LT 2500 4BS A		52	6G115001	BODY COVER SCREW (A)
20 CROSSFIRE LT 2500 4BS A		53	6G115001	BODY COVER SCREW (B)
20 CROSSFIRE LT 2500 4BS A		54	6H022001	DRIVE BEARING (B)
20 CROSSFIRE LT 2500 4BS A		55	6G472401	DRIVE BEARING RING
20 CROSSFIRE LT 2500 4BS A		56	6F721001	HANDLE COLLAR
20 CROSSFIRE LT 2500 4BS A		57	61608401	HANDLE WASHER
20 CROSSFIRE LT 2500 4BS A		58	6Q132401	HANDLE SCREW
20 CROSSFIRE LT 2500 4BS A		59	6Q662301	HANDLE ASSY

